

HDMI Active Optical Cable

Product Overview

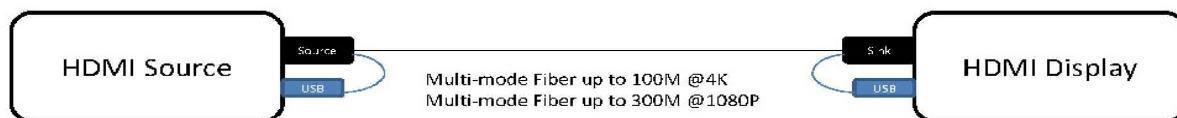
HDMI Active Optical Cable series are ideal and convenient solution for signals transmission with all HDMI connector devices. HDMI Active Optical Cable series provide high quality, real time and great distances solution with our core technology in fiber. It can transmit HDMI signals maximum distance up to 1000 feet. It is feasible to connect any HDMI devices such as Blu-ray, DVR, projector, video games, computers and mobile to enjoy the high quality display.

Features

- Compliant to link with all HDMI A-type connector devices
- Compliant with HDMI 1.4a version
- Fiber length 10/15/20/30/50/100m
- No EMI issue
- Easy to installation with optical fiber cable
- Pluggable and hot-swappable
- Support 4K2K/3D/1080p/1080i/720p format
- Support HDCP/ EDID/ CEC / DDC
- Support audio
- Data rate: 10.2 Gbps
- Blu-ray, DVR, projector, video games, computers and mobile to Full HD display



Applications



HDMI Active Optical Cable

Specifications

HDMI Signal Input & Output	
Support HDMI ver.	HDMI 1.4a
Video format	4K2K/ 3D/ 1080p/ 1080i/ 720p
Data rates	10.2 Gbps
Support features	HDCP/ EDID/ CEC / DDC
Signal input & output connector	HDMI A-type (Plug)
Audio support	Yes
Fiber length	10/15/20/30/50/100m
Single-ended iutput swing voltage, Vswing	$400\text{mV} \leq \text{Vswing} \leq 600\text{mV}$

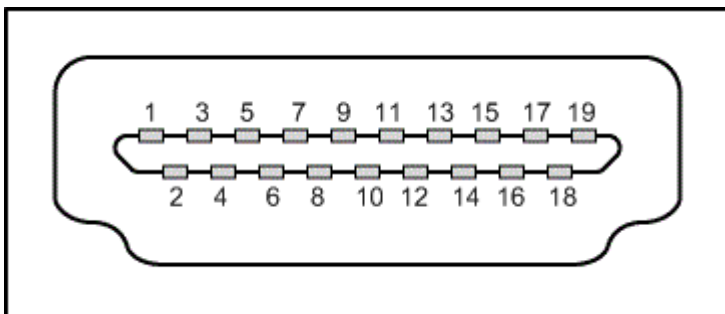
General	
Voltage	5V DC
Power supplied connector	USB @Sink[RX] AND @SOURCE[TX]
Operating temperature	0°C to 60°C
Humidity	0%~ 85% RH

HDMI Active Optical Cable

HDMI PIN Definition

Pin	Symbol	
1	TMDS2+	TMDS Data Signal Channel 2+
2	GND	TMDS Data Signal Channel 2 Shield
3	TMDS2-	TMDS Data Signal Channel 2-
4	TMDS1+	TMDS Data Signal Channel 1+
5	GND	TMDS Data Signal Channel 1 Shield
6	TMDS1-	TMDS Data Signal Channel 1-
7	TMDS0+	TMDS Data Signal Channel 0+
8	GND	TMDS Data Signal Channel 0 Shield
9	TMDS0-	TMDS Data Signal Channel 0-
10	TMDSC+	TMDS Data Signal Channel C+
11	GND	TMDS Data Signal Channel C Shield
12	TMDSC-	TMDS Data Signal Channel C-
13	CEC	Consumer Electronics Control
14	RESERVED	
15	SCL	Display Data Channel Clock line
16	SDA	Display Data Channel Data line
17	GND	Display Data Channel /CEC Shield
18	VCC5V	+5 V Input for Transmitter from Source Host
		+5 V Output for Sink Monitor from Receiver
19	HPD	Hot Plug Detect Signal

HDMI Type A plug



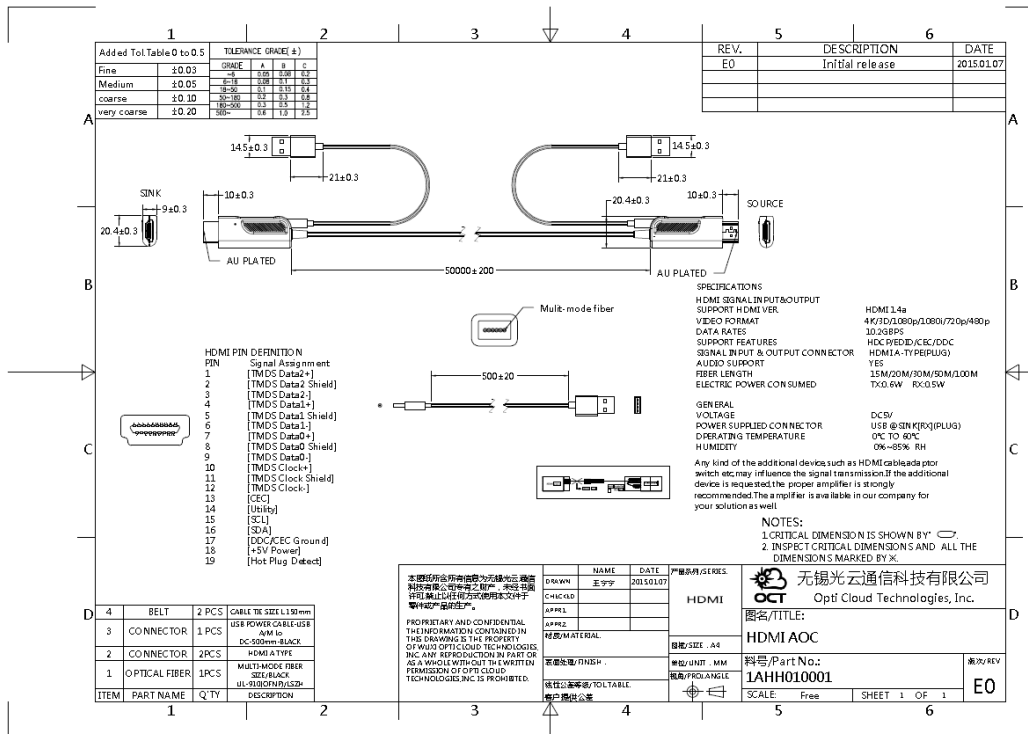
HDMI Active Optical Cable

Ordering Information

HDMI AOC Ordering Information

1AHH - □□□□□□

Length:
001000: 10M
003000: 30M
005000: 50M
010000: 100M



HDMI Active Optical Cable

Document Revision History

Date	Issue
2015-01-15	Initial Release